

Clear Cone Monitor

The optional Clear Cone provides all round high visibility position monitoring on all limit switch boxes except code -003 type, 02/03 and positioner models. A red/green colour coded monitor is sealed inside a robust, clear polycarbonate cover.

The monitor is also available directly mounted onto actuator models 05, 07, 09 and 10 and all EHD units.

For highly corrosive environments special cover materials are available - contact Kinetrol for details.

Conductive ATEX approved versions are also available - contact Kinetrol for details.

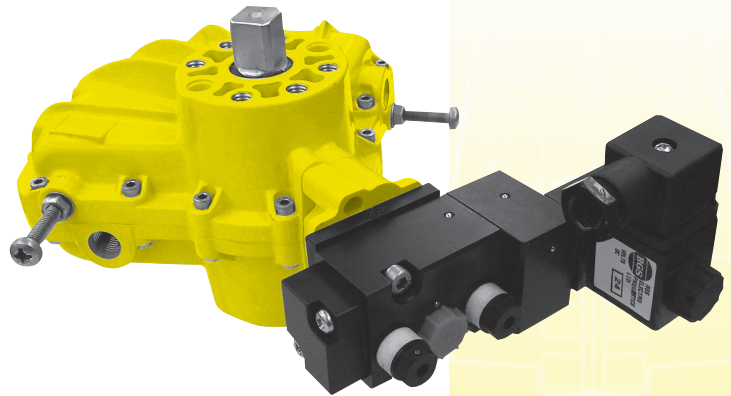
For installation details see pages 44, 45 & 46.



Solenoid Valves

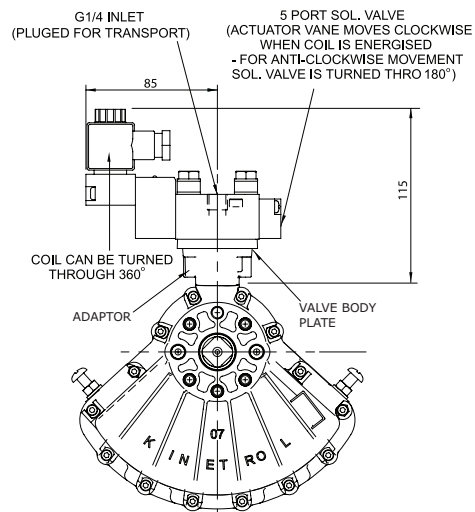
As an option KINETROL actuator sizes 03 to 14 can be supplied with integral solenoid valves with NAMUR interface. Air is ported through the actuator body via an adaptor so no external tubing is necessary.

Standard optional solenoid valves can be converted to 5 or 3 port versions by changing valve body plate supplied with the valve.



Specification

Coil voltages	AC: 50/60Hz 24, 115 & 230 volts DC: 24 Volts For other voltages contact Kinetrol
Electrical connection	DIN 43650 plug with Pg9 cable gland (6-8mm dia) as standard
Manual Override	Extra to order
Exhaust silencers / flow regulators	Extra to order
Hazardous areas	Certified solenoids are available as extras to order
Environmental Protection	To IP65 as standard
Minimum air supply	2 bar



Single solenoid, 3 or 5 port, interchangeable for double acting or spring return, NAMUR interface. Most brands of NAMUR interface solenoid valve can be supplied to special order.

